

**HONDA**  
ENGINES

# GCV 160

Vertical shaft gasoline (petrol) engine

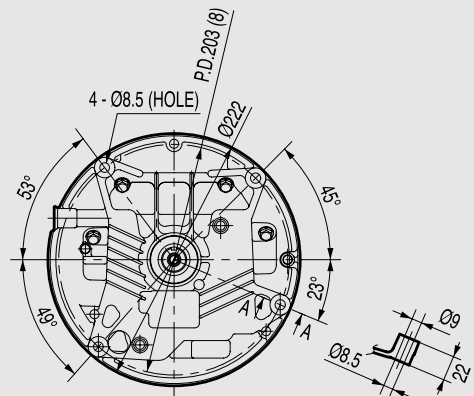
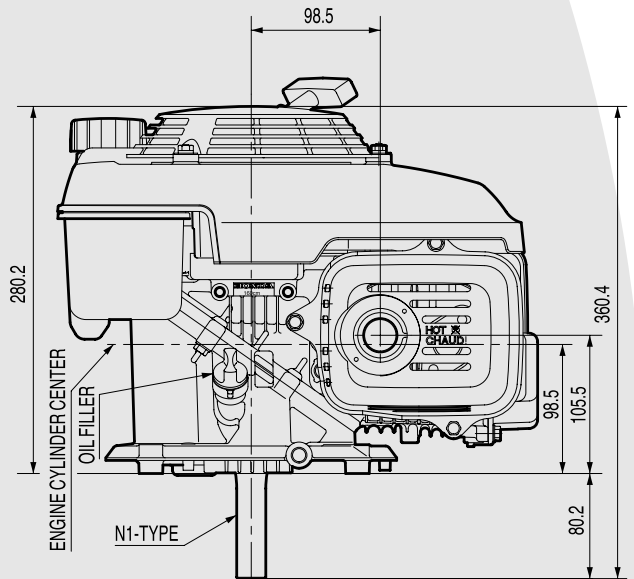
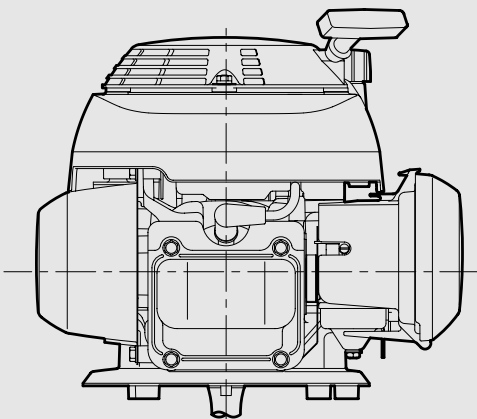
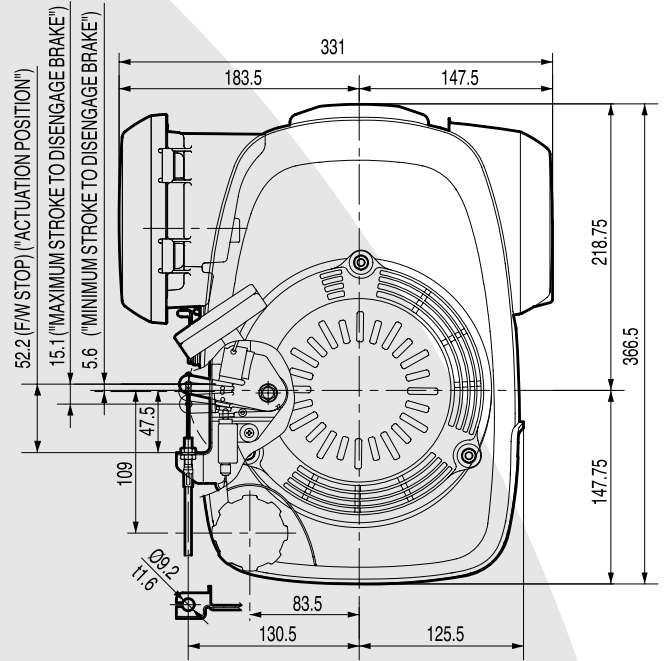
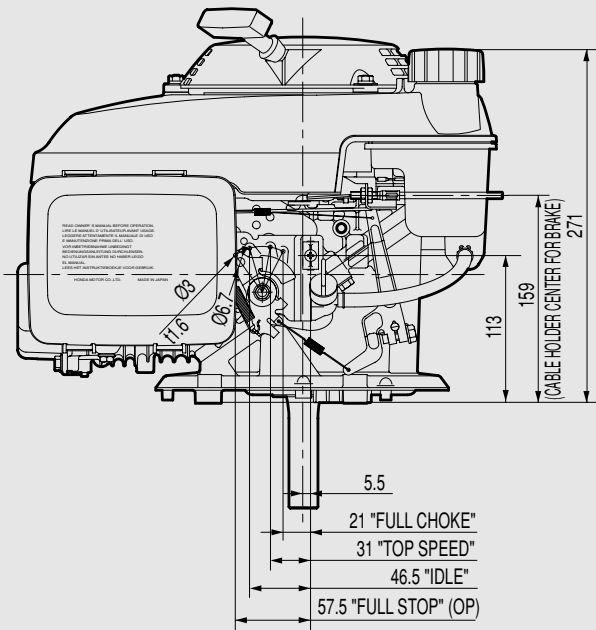
- Moteur à essence à arbre de sortie vertical
- Benzinmotor mit vertikaler Kurbelwelle
- Motore a benzina ad albero verticale



4.1 kW (5.5 HP) / 3 600 min<sup>-1</sup>

# Dimensions Unit: mm (in.)

## STANDARD TYPE

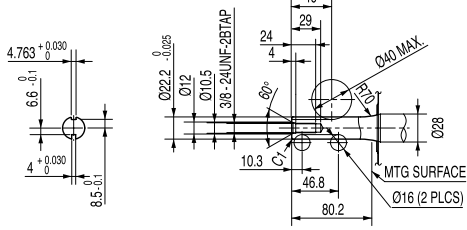


SECT AA  
 (MOUNTING BOSS SHAPE)  
 (4 PLCS SAME SHAPE)

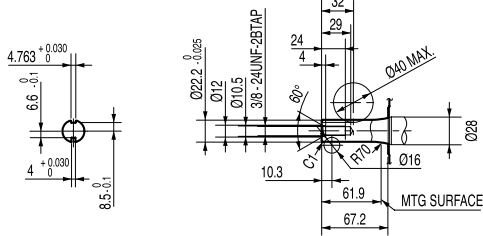
**POWERED by**  
**Honda Engines**

# PTO SHAFT DIMENSIONS

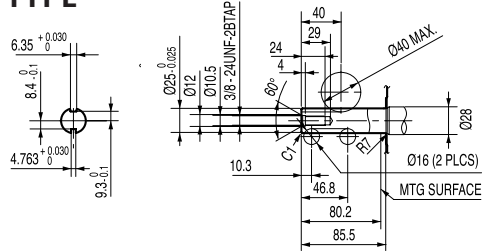
## N1-TYPE



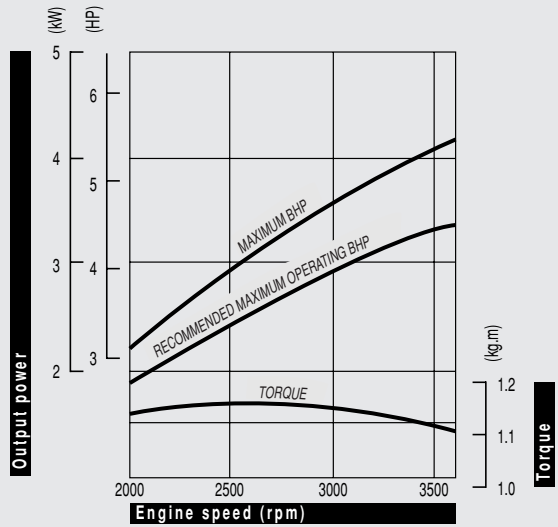
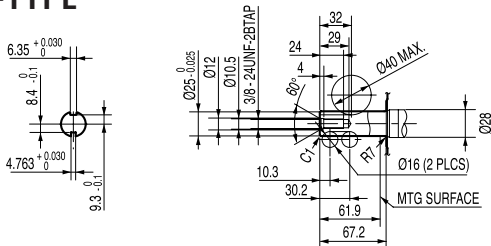
## N2-TYPE



## N3-TYPE



## N4-TYPE



### Performance curve

Horsepower rated in accordance with SAE J1995

For continuous operation, the BHP load should be less than 80% of maximum BHP

### Courbe de puissance

Puissance mesurée selon SAE J1995

Pour opération continu, la charge devrait être moins de 80% de la courbe "maximum BHP"

### Leistungsangabe

Leistung gemessen nach SAE J1995

Für Dauerbetrieb sollte die Last weniger als 80% der "maximalen Leistungsangabe (max. BHP)" sein.

### Curva di potenza

Potenza in conformità allo standard SAE J1995

Per uso continuativo, la potenza prelevata dovrà essere del 80% inferiore, rispetto a quella indicata nella curva "maximum BHP".

# GCV 160



## Specifications

Model	GCV 160
Engine type	Air cooled 4 stroke OHC petrol engine, vertical shaft, aluminium cylinder
Bore x stroke	64 x 50 mm
Displacement	160 cm <sup>3</sup>
Compression ratio	8.5 : 1
Max. power output	4.1 kW (5.5 HP) / 3 600 rpm
Maximum torque	11.4 Nm / 1.16 kgm / 2 500 rpm
Ignition system	Transistorised
Starting system	Recoil
Aircleaner type	Paper
Fuel tank capacity	1.1 l
Specific fuel cons.	313 g/kW.hr - 230 g/HP.hr
Engine oil capacity	0.55 l
Dimensions (L x W x H)	366 x 331 x 360 mm
Dry weight	9.8 kg

## Spécifications techniques

Modèle	GCV 160
Type du moteur	Moteur à essence monocylindre 4 temps OHC, refroidissement à air, arbre de sortie vertical, cylindre en aluminium
Alésage x course	64 x 50 mm
Cylindrée	160 cm <sup>3</sup>
Taux de compression	8.5 : 1
Puissance maxi	4.1 kW (5.5 ch) / 3 600 tr/mn
Couple maximal	11.4 Nm / 1.16 kgm / 2 500 tr/mn
Système d'allumage	Transistorisé
Système de démarrage	Lanceur à retour automatique
Type du filtre à air	Papier
Cap. du réservoir d'ess.	1.1 l
Cons. d'essence spéc.	313 g/kW.h - 230 g/ch.h
Capacité d'huile moteur	0.55 l
Dimensions (L x l x H)	366 x 331 x 360 mm
Poids à sec	9.8 kg

All specifications are subject to change without notice. Les caractéristiques techniques peuvent être modifiées à tout moment et sans préavis.

## Spezifikationen

Modell	GCV 160
Motortyp	Luftgekühlter 1-Zylinder 4-Takt OHC Benzinmotor, vertikale Kurbelwelle, Aluminiumzylinder
Bohrung x Hub	64 x 50 mm
Hubraum	160 cm <sup>3</sup>
Verdichtung	8.5 : 1
Höchstleistung	4.1 kW (5.5 PS) / 3 600 min <sup>-1</sup>
Max. Drehmoment	11.4 Nm / 1.16 kgm / 2 500 min <sup>-1</sup>
Zündsystem	Elektronische Zündung
Starter	Reversierstarter
Luftfilter	Papier
Tankinhalt	1.1 Liter
Spez. Kraftstoffverbrauch	313 g/kWh - 230 g/PSH
Motorölkapazität	0.55 Liter
Maße (L x B x H)	366 x 331 x 360 mm
Trockengewicht	9.8 kg

## Dati tecnici

Tipo	GCV 160
Tipo di motore	Motore monocilindrico OHC ad albero verticale, ciclo otto, 4 tempi, raffreddamento ad aria forzata, cilindro in alluminio
Alesaggio x corsa	64 x 50 mm
Cilindrata	160 cm <sup>3</sup>
Rapporto di compressione	8.5 : 1
Potenza massima	4.1 kW (5.5 CV) / 3 600 giri/min
Coppia massima	11.4 Nm / 1.16 kgm / 2 500 giri/min
Accensione	A transistor senza contatti
Avviamento	A strappo con autoavvolgente
Sistema filtro aria	A secco
Capacità serbatoio	1.1 l
Consumo combustibile	313 g/kWh - 230 g/CVh
Capacità coppa olio	0.55 l
Dimensioni (Lu x La x A)	366 x 331 x 360 mm
Peso a secco	9.8 kg

Le specifiche sono soggette a cambiamento senza preavviso. Die Spezifikationen können ohne Vorankündigung geändert werden.

Ref. EEC - TS 2002/08 - GCV 160

hella@iohta.com

**Germany • Honda Engines / Selling agent**  
Honda Logistik Center Deutschland GmbH  
Sprendlinger Landstraße 166  
D-63069 Offenbach/Main  
TEL: + 49 (0)6 98 30 95 17  
FAX: + 49 (0)6 98 30 91 28

**United Kingdom • Honda Engines / Selling agent**  
Honda Logistics Centre (UK) Ltd.  
Unit 3210, Wellington Parkway,  
Magna Park Lutterworth,  
Leicestershire LE 17 4JQ United Kingdom  
TEL: + 44 (0)1 45 55 59 429  
FAX: + 44 (0)1 45 55 59 428

**HONDA**  
ENGINES

**Honda Europe NV**  
EUROPEAN ENGINE CENTER  
Langerbruggestraat 104 • B-9000 Gent  
TEL: + 32 (0)9 250 12 11 • FAX: + 32 (0)9 250 14 24

**Italy • Honda Engines / Selling agent**  
Honda Logistic Centre Italy S.P.A.  
Via Strà, 153  
I-37030 Colognola ai Colli (VR)  
TEL: + 39 04 56 17 33 41  
FAX: + 39 04 56 15 12 70

**France • Honda Engines / Product information center**  
Parc d'Activités de Pariest  
Allée du 1er Mai  
Croissy Beaubourg  
F-77313 Marne-La-Vallée Cedex 13  
TEL: + 33 (0)1 60 37 31 18  
FAX: + 33 (0)1 60 37 33 66